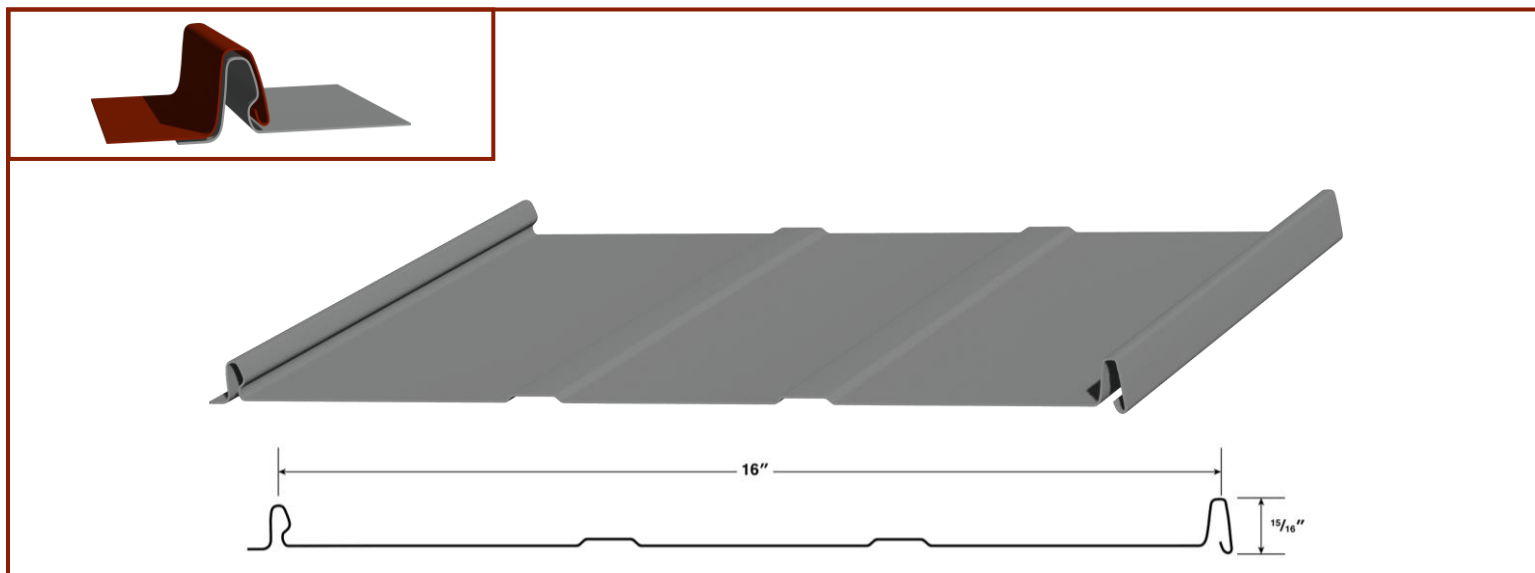
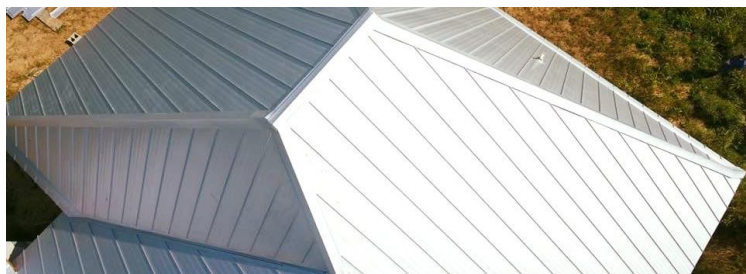


The MaxLoc100™ panel is a cost-effective standing seam option that combines clean aesthetics with reliable performance. Featuring a 16" coverage width and 1" rib height, it installs over solid substrates using a concealed fastener leg, minimizing the risk of leaks and enhancing curb appeal. Its flat surface and vertical seams create a modern look ideal for residential and light commercial applications. Made from Galvalume® coated steel and available in 26 or 24 gauge steel and .032" aluminum gauge, MaxLoc100™ is finished with Sherwin-Williams WeatherXL™ for long-lasting color and durability. It's the more economical of MetalMax's standing seam profiles.



DETAILS & CERTIFICATIONS

- Coverage Width = 16"
- Major Rib Height = 1"
- Minimum Slope = 3:12
- Material = Galvalume® Coated Steel / Aluminum
- Available Gauges = 26, 24 / .032"
- Maximum Length = 30' / 25'
- Installation Substrates = Solid Substrate only
- Fasteners = Concealed Fastener
- Color / Finish = AC Galvalume, Weather XL, PVDF™
- Snap-together Ribs
- Screw Flange
- Limited Thermal Movement
- Onsite Fabrication Available
- Florida Building Code Product Approvals
- Texas Department of Insurance Product Approvals



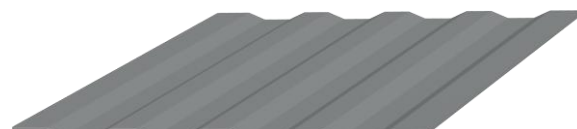
PANEL SURFACE PROFILES



FLAT PAN



PENCIL RIB



STRIATIONS



MINOR RIB